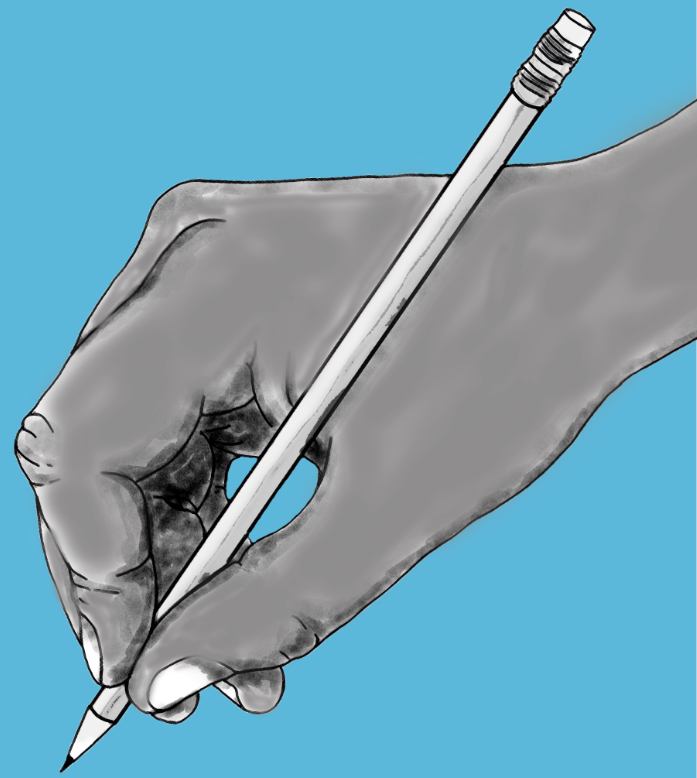


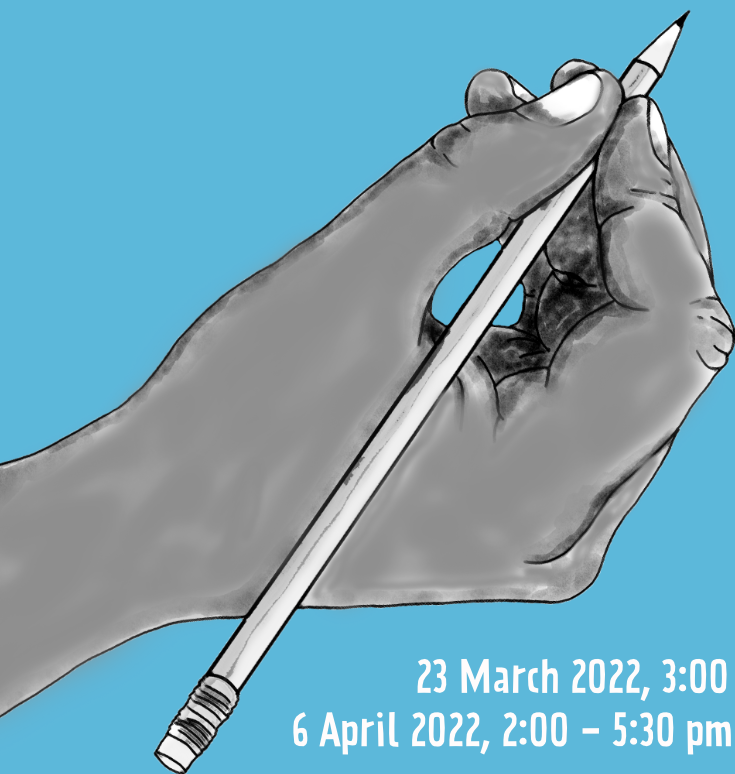
ENCOUNTERING DIFFERENCE  
A Feminist Geographies Seminar Series



# INTERWEAVING IDEAS

with Sarah Holloway  
and Sophie Hadfield-Hill

Threads From Feminist, Children's  
and Education Geographies



23 March 2022, 3:00 pm (CET): Online-Keynote Prof. Sarah Holloway,  
6 April 2022, 2:00 – 5:30 pm (CET): Online-Workshop Dr Sophie Hadfield-Hill

funded by Stabstelle Gleichstellung, Pädagogische Hochschule Freiburg  
[ak-feministische-geographien.org/encounteringdifference](http://ak-feministische-geographien.org/encounteringdifference)

## ENCOUNTERING DIFFERENCE: A FEMINIST GEOGRAPHIES SEMINAR SERIES

**23 March 2022, 3:00 pm (CET): Online-Keynote Prof. Sarah Holloway**

*Feminism and Children's Geographies: Linkages, Autonomy, Relations, and Connections*

The purpose of this lecture is to explore the intersections between Feminist and Children's Geographies. The first section, Linkages, examines the diverse roots of Children's Geographies, demonstrating the importance of both feminist and other intellectual traditions in the development of this field. Autonomy, the second section, focuses on vibrant research into children's competence as social actors. Illustrations are drawn from investigations into children's landscapes of play. The third section, Relations, considers how feminist theorisations of subjects as contingent constructions reshape the agenda in Geographies of Children, Youth and Families. This is exemplified through a case study on after-school childcare provision. Connections, the final section, interrogates the contemporary meeting points between researchers in Feminist, Children's and Education Geographies. A research vignette about private tuition elucidates this nexus. In conclusion, the paper argues that Feminist Geography has been an important influence on the development of Geographies of Children, Youth and Families, but its ongoing role is not assured.

Sarah Holloway is a Professor of Human Geography at Loughborough University. She is a Feminist Geographer with an international reputation for research in Children's Geographies and Geographies of Education. Her recent research explores these themes through a focus on geographies of education and learning, a field which foregrounds the ways wider social processes shape (and are reshaped through) formal and informal spaces of education, and considers how this is experienced, embraced and contested by educators and diverse subjects of education. Her research on primary education explores: neoliberal educational restructuring; the growth of enrichment activities for children; the changing nature of play; parenting education; and mothers' efforts to balance earning a living with caring for their children. In the secondary sector, her research explores the marketisation of private tuition and socio-spatial differentiation in the use of tutors. In the university sector, she has explored implications of gender, sexuality and religion in young people's accrual of cultural capital when they are internationally mobile for higher education.

**6 April 2022, 2:00 – 5:30 pm (CET): Online-Workshop Dr Sophie Hadfield-Hill**

*Thinking with Water, Mud and Non-Human Others in Childhood Research: Opening up Conversations About Entanglement, the Environment and Inequality*

This workshop is to initiate a conversation and exchange about current children's geography research. Sophie will present three mini-lectures on i) watery entanglements; ii) geological agents and iii) complicating childhood-nature relations as starting points for group discussion about entanglement, non-human others, the environment and inequality. Participants will be expected to share their own research interests and work together to think about new research directions and priorities.

Sophie is an Associate Professor of Human Geography at the University of Birmingham. She is an internationally recognised Children's Geographer with expertise in children and young people's everyday experiences of urban change in diverse contexts. Her research portfolio spans young people's lives in the UK, India and Brazil. She has led cutting-edge debates on public space, community mapping, participation, child-friendly cities; as well as theoretically engaging pieces on young people's relationships with diverse natures and urban infrastructures. She holds key positions in the field, namely the Chair of the *Geographies of Children, Youth and Families* RGS-IBG research group and an Associate Editor position for the journal *Children's Geographies*.

*Both events will take place via Zoom and will be held in English. Please register [here](#).*